

The beauty of Italian flooring

# ESA Palette

---

Designer PVC

liuni



The beauty of Italian flooring



# Perfor- mance

---

Heterogeneous vinyl flooring creates **infinite surfaces**. **ESA Palette** is a product which is **much more resistant** and **hard-wearing** than similar products.

The use of **advanced** calendaring **technologies**, with cast extrusion and cast calendaring, makes it possible to produce **exceptional technical products**: the ideal solution that combines aesthetics, functionality, production capacity, environmental and economic sustainability.

It is suitable for Offices, Hospitals, Schools, Restaurants, Nursing Homes, Shopping Centres, Fitness Centres, SPA facilities and Shops.

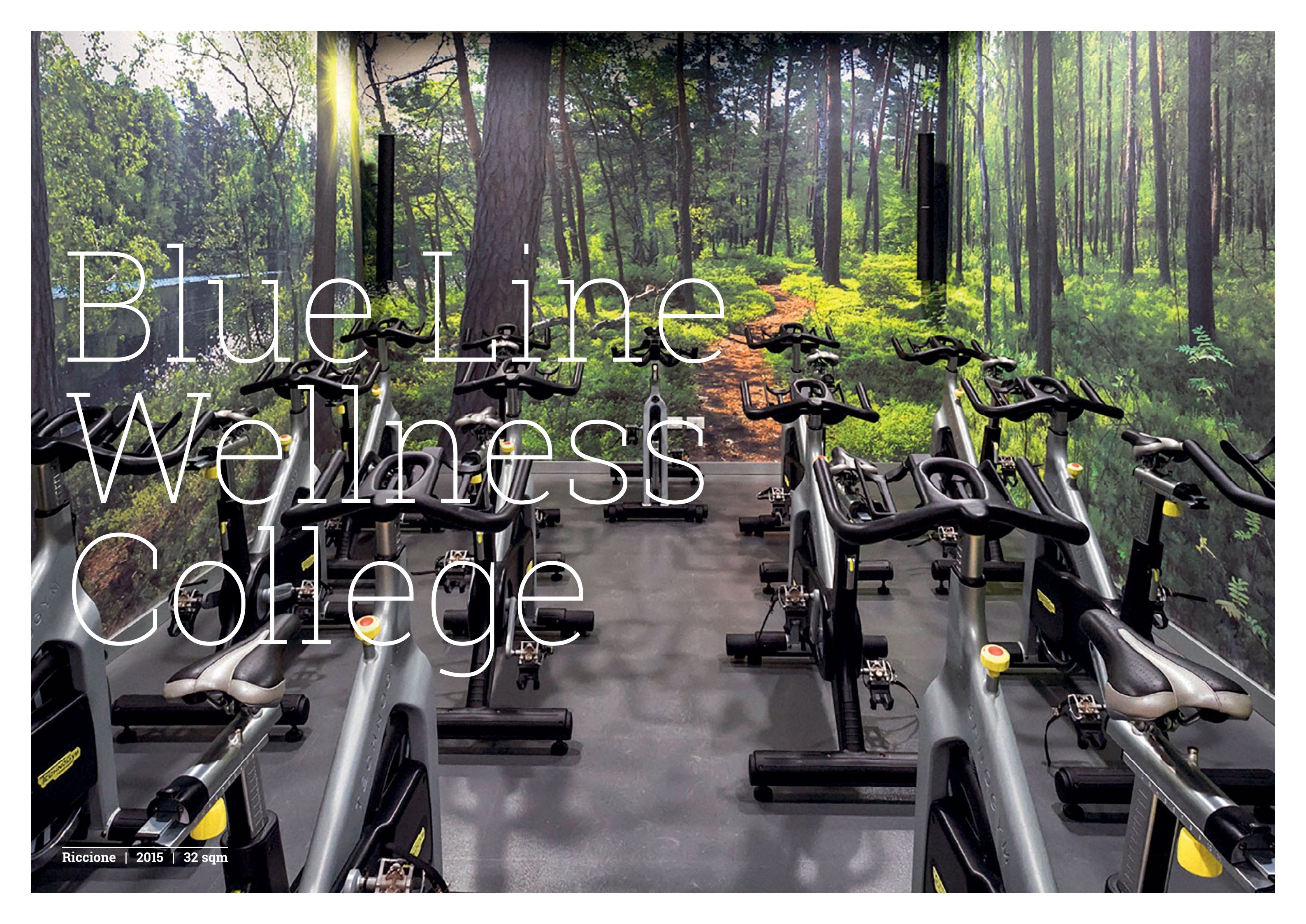
**Thirty years** of extraordinary performance thanks to the use of **ESA-branded** materials for high-end customers such as Vodafone, Oracle, Niguarda, La Stampa, La Gazzetta dello Sport, Konica Minolta and many more. Either for **small projects** or for **industrial** ones, **Liuni** operates with the same **care** and **commitment**.

# Oracle Italy

Rome | 2017 | 45 sqm



# La Gazzetta dello Sport

A row of stationary exercise bikes in a gym. The background is a large mural of a forest with tall trees and sunlight filtering through the canopy. The bikes are arranged in two rows, facing each other, with a central aisle. The floor is a light-colored, polished surface.

# Blue Line Wellness College



# Diabolik Restaurant Café

# Niguarda Hospital



# Vodafone Village

"Il Caffè e' il luogo piu' adatto  
per uniformarci a tutto cio' che e' nuovo."

(Stefan Zweig)

# Miulli Hospital

Bari | 2004 | 61.000 sqm



# De- sign

---

A neutral, uncluttered floor with **elegant, unique character**.  
A design element with artistic inspiration.

**Shapes** and **colours** come together in an interplay  
of **refined aesthetics**. **ESA Palette** and high-quality  
accessories are accomplices to unexpected chromatic and  
stylistic harmony.  
Silent energy, dynamic order, discreet impact.

**The perfect balance of function and aesthetics.**

**Liuni always sells high-quality innovative floorings**,  
that ensures the highest level of resilience and durability on  
the market, along with captivating aesthetics, **able to keep  
up with the times**.



74.1050  
**Lazio saltwort**

69.2040  
**Trentino Blueberry**

30.5502 M  
30.7502  
**Asphalt**

A 3D architectural rendering of a room. On the left, there is a tall, textured orange pillar made of stacked rectangular blocks. The floor is a solid orange color. In the center, there is a rectangular teal rug. The walls are a light purple color. On the right side, there is a vertical orange textured panel. Overlaid on the right side of the image is the text 'MODULAR FLEXIBILITY FOR EVERY ROOM' in a purple, serif font.

# MODULAR FLEXIBILITY FOR EVERY ROOM

53.1060  
**Bologna Apricot**

74.1050  
**Lazio Saltwort**

Always  
by your  
side



GT.3502  
Travertine

30.7502  
Asphalt



53.1060  
**Bologna Apricot**

30.7502 M  
**Asphalt**

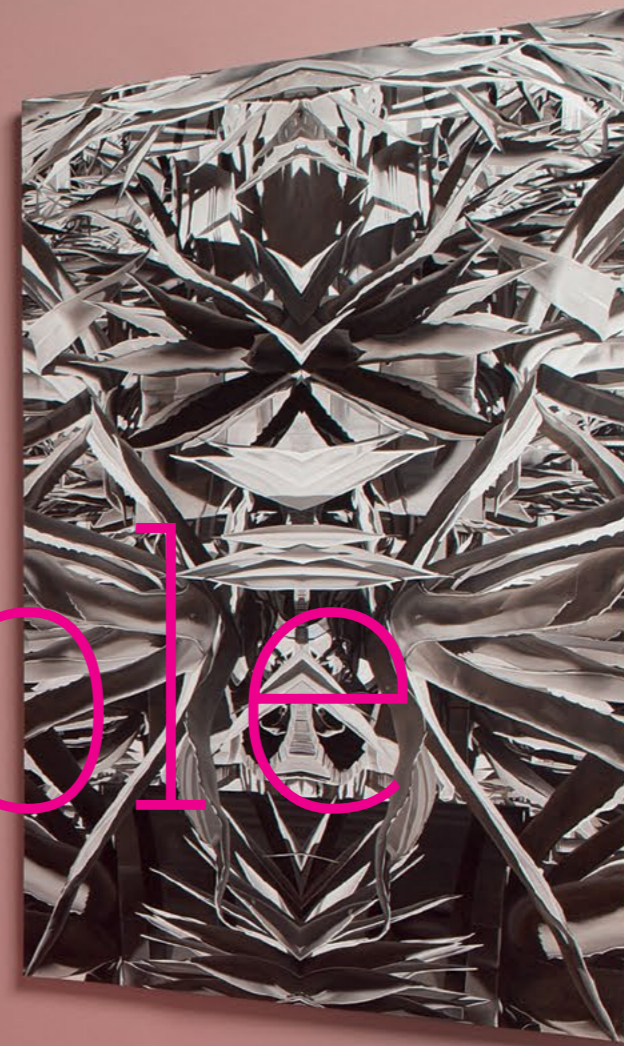
100% ITALIAN  
QUALITY  
FOR OVER  
THIRTY YEARS



51.1040  
**Milanese Potato**  
GT.2502  
**Travertine**



# A sustainable present



100% Recyclable

61.1040 M  
Venetian Peach

10.7502  
Sand



# His- tory

---

**For over 50 years, Liuni has been an Italian leader in products and services for the interior flooring and wall coverings sector.**

The **ESA series** has been a mainstay since the **1980s**. From the day our doors opened, we have managed the entire supply chain related to its collections, from **production** to **sales** and installation.

However, the ESA series was in need of a restyle. So, after two years of research and development conducted with experts in the field, sifting through dozens of samples and colour solutions, we emerged with a product that's **substantially updated, flexible, contemporary** and available in a **vast range of shades**, introducing new concepts to a formerly stagnant industry.

The result of our in-depth research is **ESA Palette**: a **unique product** in terms of its **quality** and **performance**, both of which are renewed for today's modern world. While remaining true to the past and its origins, it also combines **ESA technology** with countless **creative possibilities** through the word **Palette**.

Its **colours** were borrowed from those **found in nature** or those which we're used to seeing in our daily lives, inspired by the rich **produce** and **artistic heritage of Italy**.

By **produce** we mean the wealth of the **Mediterranean** diet: from Sicilian almonds to blueberries from Trentino. By **artistic heritage**, we refer to the **traditional stone flooring** found in ancient Italian villages: from Basalt from the slopes of Vesuvius to Classic Travertine.

**ESA Palette is available in rolls, loose lay tiles, planks and hexagons, with varying thicknesses, textures and acoustic properties.**

Today, **Liuni** is the **only** Italian manufacturer in the vinyl flooring industry. And with a manufacturing plant just 80 km away from our historical Milan headquarter, the brand is a **guarantee of Made in Italy quality**.



# SUSTAINABLE FOR TODAY AND TOMORROW

Liuni products are 'green', manufactured thanks to processes that promote environmental, economic and social **improvement along every step of the supply chain.**

That means our PVC is environmentally sustainable, **100% recyclable, Eco friendly** and **LEED approved.**

We've reached our goal of **resource renewal** thanks to the intrinsic ability of a few materials to transform and be recycled, and to the world's most **advanced** manufacturing **technology.**



# 100% ITALIAN QUALITY

**ESA Palette** is a range of superior vinyl flooring that's as heterogenous and creative as both nature and art.

**Because nature and art were its inspiration.**

Excellent quality, made with experience and passion, as only Italian products can be. **Because Liuni is the leading - and only - PVC manufacturer in Italy.**

Our vinyl flooring has enjoyed **over 30 years of success**, the result of **one-of-a-kind technology**.

Today we've given the range a new **colour palette**, a fresh selection of shades for designers to draw upon. The use of PVC **grains**, like the seeds of **mediterranean fruit** or the mineral deposits of a **stone slab**, gives rise to entirely unique products.



# MAXIMUM RESISTANCE & DURABILITY

## ESA Palette: superior quality.

At Liuni, quality is the **combination** of captivating **aesthetics** and top-of-the-line **performance**: rigid PVC grains result in a product that's **much more resistant** and **long-lasting** than its competitors.

Tiles, planks or rolls, for large or small surfaces, the colour palette is designed to be combined according to technical and aesthetic criteria.

**Liuni's strong organization** makes it possible for to **satisfy** complex **requirements** as well as those focused on performance, as is often the case in the **healthcare** industry, on design, as in **offices** or **retail** spaces, and even those of the world of **Fitness** and **SPAS** where performance fuses with design.




# MEMORABLE BECAUSE IT'S SPECIAL

The **flexibility** of a neutral floor, a canvas waiting for **artistic lines**.

ESA Palette elevates the role of PVC to a design piece, **a clean slate at the service of creativity**, a modern element that creates a special, elegant atmosphere in any room. It is the embodiment of **harmonious uniformity with maximum expressivity**.

**ESA Palette** combines Liuni's principle qualities with those of **Italian history**, the **inspiration** of such notable innovation in the collection's colour palette: **stone slabs** and **fruit found in the Italian countryside**.



# ALWAYS BY YOUR SIDE

**Every requirement has a solution.**

Which is why we develop unique, personalised solutions that are tailor-made to perfectly fit their environment, directly from **our offices throughout Italy**. The Liuni headquarters in **Milan**, the branches in **Rome** and **Verona** and a complex **network of agents and representatives** ensure nothing but **full support** in the creation of the product that best meets **your needs**.

**Liuni is, and always has been, quality on every floor!**

# Italian

## Grain | Stone Effects



Cod. GB.2502  
**Basaltina**

② ⑤



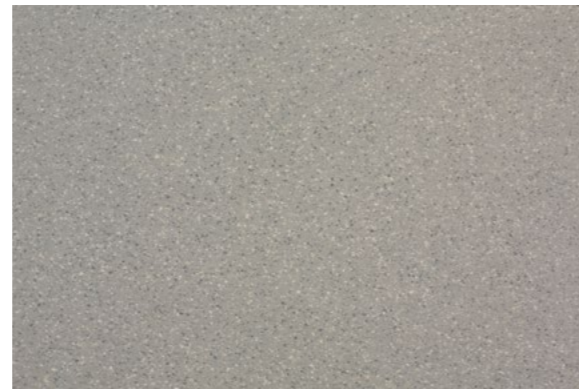
Cod. GT.2502  
**Travertine**

② ⑤



Cod. GB.3502

②



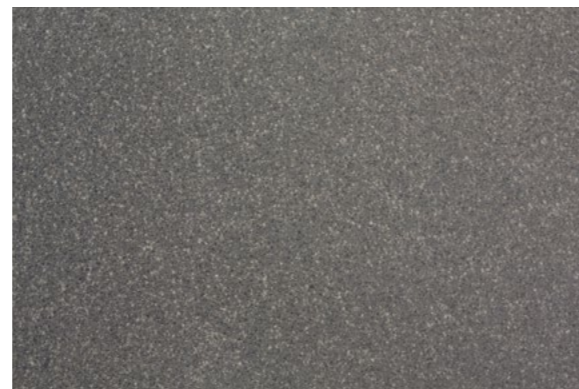
Cod. GT.3502

②



Cod. GB.6502

② ⑤

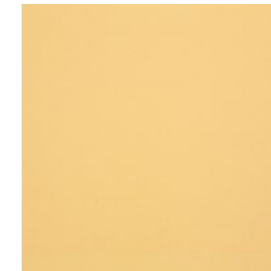


Cod. GT.6502

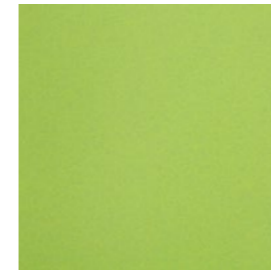
②

# Natural

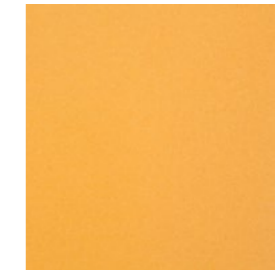
## Nuance



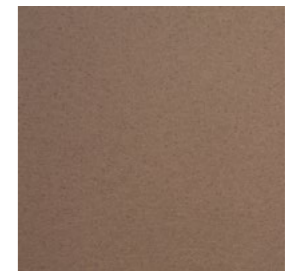
Cod. 51.1040  
**Milanese Potato**



Cod. 84.1060  
**Apulian Kiwi**



Cod. 53.1060  
**Bologna Apricot**



Cod. 55.5010  
**Sicilian Almond**

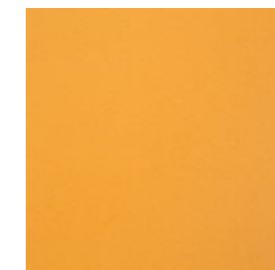
⑤



Cod. 84.1060 M  
**Apulian Kiwi**



Cod. 51.1040 M  
**Milanese Potato**



Cod. 53.1060 M  
**Bologna Apricot**



Cod. 55.5010 M  
**Sicilian Almond**

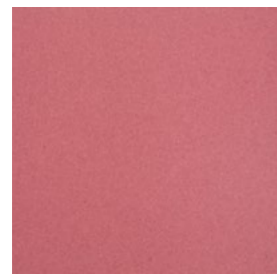
Available from Stock:  
② sp. 2,2 thk ⑤ sp. 5 thk

Minimum quantity for colours, special sizes, embossed versions and acoustic backing not available from stock, please check the technical datasheet.

With regard to color printing of close up images, it is only possible to give a temporary representation of the color. For the choice of color, we recommend viewing the sample.



# Natural Nuance



Cod. 61.1040  
**Venetian Peach**



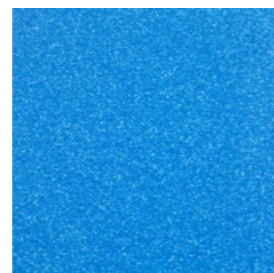
Cod. 74.1050  
**Lazio Saltwort**



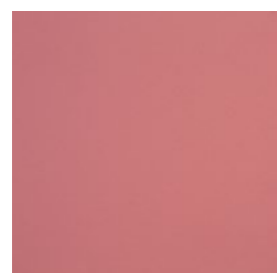
Cod. 66.2040  
**Florentine Iris**



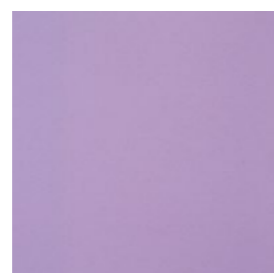
Cod. 69.2040  
**Trentino Blueberry**



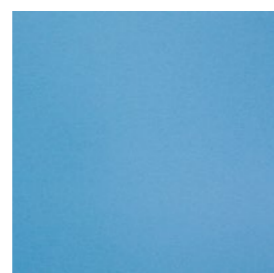
Cod. 69.3060



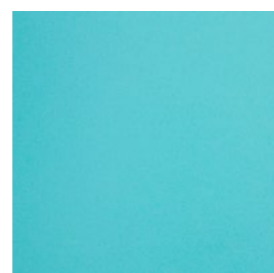
Cod. 61.1040 M  
**Venetian Peach**



Cod. 66.2040 M  
**Florentine Iris**



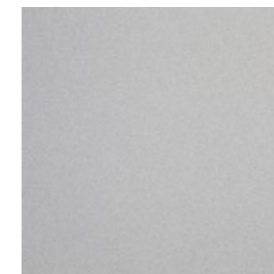
Cod. 69.2040 M  
**Trentino Blueberry**



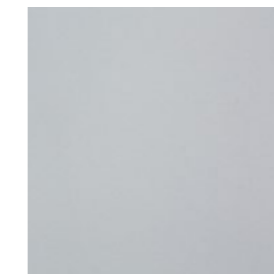
Cod. 74.1050 M  
**Lazio Saltwort**

With regard to color printing of close up images, it is only possible to give a temporary representation of the color. For the choice of color, we recommend viewing the sample.

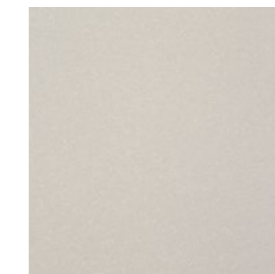
# Neutral Nuance



Cod. 30.2502 **Asphalt** ② ⑤



Cod. 30.2502 M  
**Asphalt**



Cod. 10.2502  
**Sand**



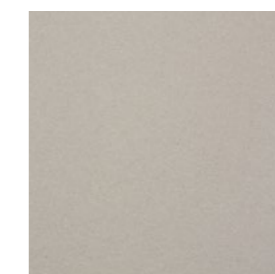
Cod. 10.2502 M  
**Sand**



Cod. 30.4502 ② ⑤



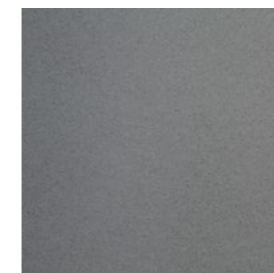
Cod. 30.4502 M



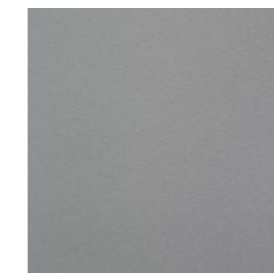
Cod. 10.3502 ② ⑤



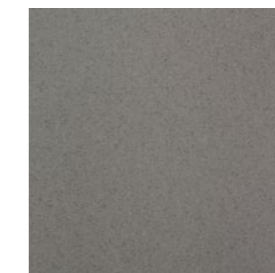
Cod. 10.3502 M



Cod. 30.5502 ② ⑤



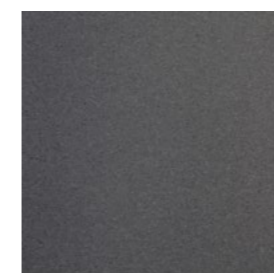
Cod. 30.5502 M



Cod. 10.5502 ② ⑤



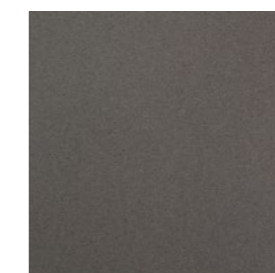
Cod. 10.5502 M



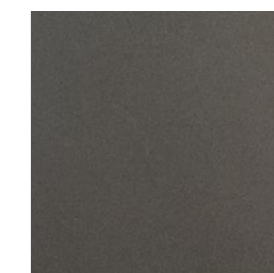
Cod. 30.7502 ②



Cod. 30.7502 M



Cod. 10.7502 ② ⑤



Cod. 10.7502 M

Available from Stock:  
② sp. 2,2 thk ⑤ sp. 5 thk

Minimum quantity for colours, special sizes, embossed versions and acoustic backing not available from stock, please check the technical datasheet.



# Technical specifications

## ESA Palette



100% Recyclable

**Anti-static vinyl flooring, coextruded adhesive version (2,2 mm) or loose lay version (5,0 mm), cast/calendered, flexible, weldable (2,2 mm), solid colour and complementary toned highlights.**

### Composition:

Wear layer made of rigid PVC granules, preformed in different sizes, and vinyl resins with very low content of inert fillers (maximum 20%), approved plasticisers (ECHA), stabilisers (free from heavy metals) and colouring pigments. The backing is in monochrome PVC with plasticisers, stabilisers and inert filler additives (maximum 40%). Both layers are produced as a single bi-homogeneous solution (uncoupled).

### Use Area:

Offices / Hospitals / Clinics / Shops / Stores / Schools / Gyms / SPA

**Thickness:** 2,2 mm (adhesive) / 5,0 mm (loose lay)

**Tile size:** 60,8 x 60,8 cm in **2,2 mm** (thickness), can also be produced in 140 cm x 20 m rolls

**Plank size:** 60,8 x 91,2 cm in **5,0 mm** (loose lay version), can also be produced as standard 10 x 90 cm / 20 x 90 cm / 30 x 90 cm size and a special 60,8 x 60,8 cm size on request

**Weight:** Ca. 3,0 kg/sqm (adhesive version) - Ca. 7,25 kg/sqm. (loose lay version)

**Tile Packaging:** Boxes with 15 pieces equivalent to 5,54 sqm. (**2,2 mm** adhesive version)

**Plank Packaging** for **60,8 x 91,2:** Boxes with 6 pieces equivalent to 3,33 sqm. (**5,0 mm** loose lay version)

**Wear layer:** 0,90 mm (adhesive version), 2,0 mm (loose lay version)

EN 685/EN 649: 34/43 EN 660:0,036 mm

**Class T:** Maximum level

**Residual indentation (adhesive version):** EN 433  $\leq 0,01$  mm (Suitable  $< 0,10$  mm)

**Residual indentation (loose lay version):** EN 433  $\leq 0,06$  mm (Suitable  $< 0,10$  mm)

**Dimensional stability:** EN 434  $\leq 0,15\%$  (Suitable  $< 0,25\%$ )

**Anti slip property:** DIN 51130:R9 BCRA Method  $> 0,40 \mu$

**Acoustic impact sound reduction:** DIN 52210 - ISO 717/02/82

4 dB (adhesive version), 6 dB (loose lay version), 14 dB (acoustic version for 5,0 mm)

**Electrical behaviour (body voltage):** Anti-static EN 1815  $< 2KV$

**Reaction to fire:** EN 13501-1 Bfl - s1 Class 1 (Ministerial Decree 15.03.2005)

**Castor Chair:** DIN 53424 100.000 revs: Suitable / EN 425: Suitable

**Colour fastness to light:** DIN 53387 = Ca. 6.

**Number of colours:** 39

**Minimum quantity for special or no stock colours and sizes, embossed versions and acoustic backing:**

250 sqm. for tiles and planks, special rolls can be produced starting from 420 sqm.

### Liuni SpA

Via G. Stephenson, 43  
20157 Milan, Italy

**T** +39 02 30.73.1  
**F** +39 02 30.73.221

info@liuni.com

### Rome branch

Via Aurelia, 547 - 557A  
00165 Rome, Italy

**T** +39 06 66.04.851  
**F** +39 06 66.04.8540

filialeroma@liuni.com

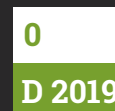
### Verona branch

Via G. De Sandre, 9  
37135 Verona, Italy

**T** +39 045 59.28.61  
**F** +39 045 80.19262

filialeverona@liuni.com

www.liuni.com



**LIUNI: QUALITA' SU OGNI PIANO**  
PRODUCTS AND SERVICES FOR INTERIOR FIT-OUT