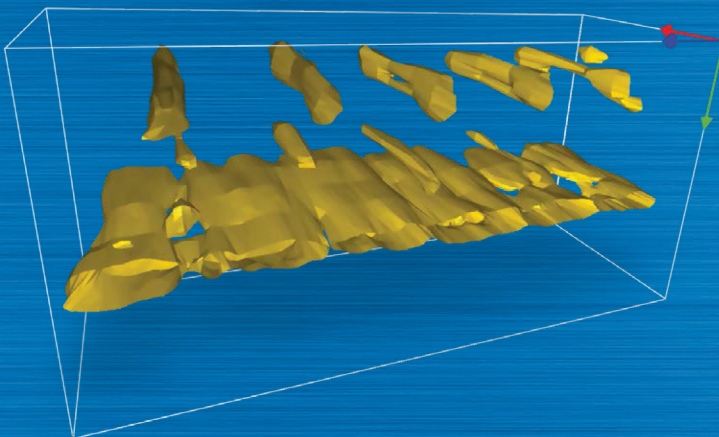


# A1020 MIRA *Lite*

THE MOST PORTABLE AND HANDY TOMOGRAPH  
FOR REINFORCED CONCRETE INSPECTION



- Real-time B-scan image
- New generation of wear-proof DPC transducers
- Outstanding near-field resolution
- Optional Full-3D acquisition mode

### Visualization by INTROVIEW®

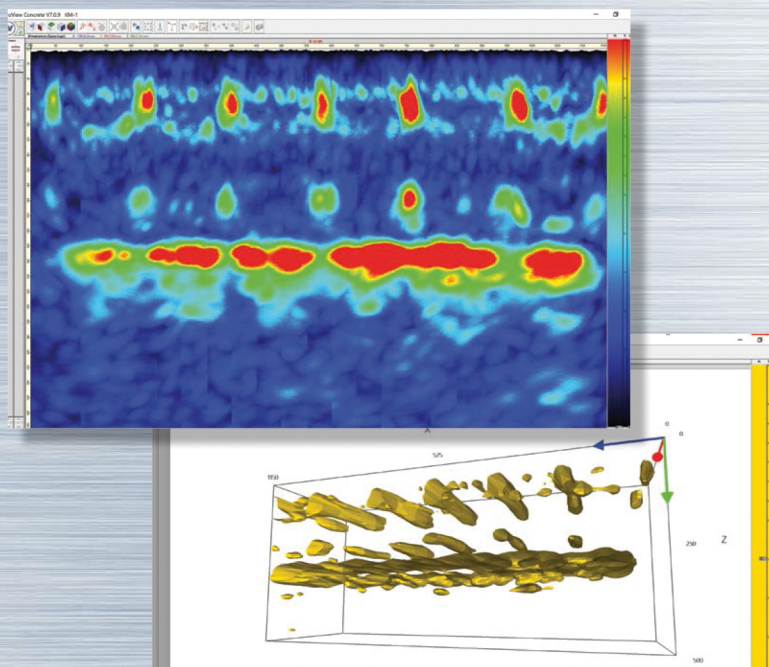
- Integral assessment by 3D imaging
- Novel crack sizing functionality

# Specification

Number of transducers in antenna	32 (8 groups x 4 elements)
Measuring range	10 to 1.000 mm*
Time of continuous operation	up to 16 hours**
Analogue band width	10 to 100 KHz
Nominal transducer frequency	50 KHz
Safety rated	IP54
Physical size of transducer array:	220 x 110 x 90 mm

# Special Features

- Lightweight antenna array for longstanding on-site operation
- Real-time B-scan with FRR up to 10 Hz
- German TÜV certified methodology for reinforcement and duct channels detection
- Novel crack-depth evaluation functionality
- Improved dust protection by durable membrane



# 3D Software INTROVIEW®

- 3D-View modes:
  - ISO-Surface
  - Texture Mapping
  - Maximum Intensity Projection
- 2D-View modes:
  - Panorama B-, C-, D-Scan
  - Cutting plane / gated volume
- Compatibility with other ACS Instruments (A1220 MONOLITH, A1040 MIRA)



# Delivery Kit

- A1020 MIRA Lite Electronic Unit
- M4002 Antenna Array
- 220V/15V Power supply unit
- USB cable
- Checking sample
- Transport case
- Free Software INTROVIEW®