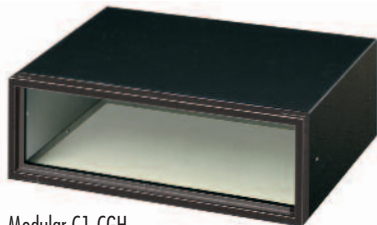
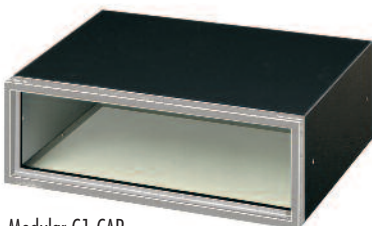




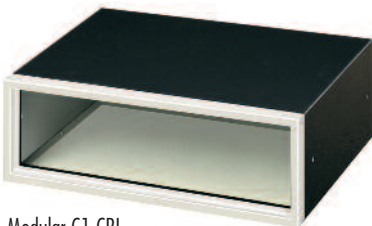
Esempio cassetta Modular 1: Corpo (C1) + Sportello (SP1)
Example of Modular 1 mailbox: Body (C1) + Door (SP1)



Modular C1 CGH
con cornice di plastica ghisa - with cast-iron grey plastic frame



Modular C1 CAR
con cornice di plastica argento - with silver plastic frame



Modular C1 CBI
con cornice di plastica bianca - with white plastic frame

(confezione da 6 pezzi)

CORPO MODULAR 1 PRELIEVO FRONTALE

C1 • Corpo per cassetta componibile
in **alluminio**

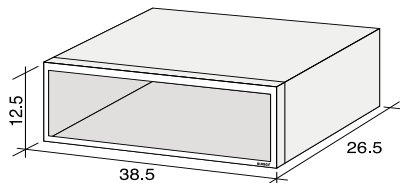
C1F • Corpo per cassetta componibile
in **lamiera elettrozincata**

(6-pieces package)

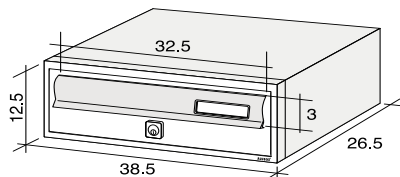
MODULAR 1 BODY FRONT ACCESS

C1 • Body for modular mailbox - **aluminium**

C1F • Body for modular mailbox
electrogalvanized sheet steel



MODULAR C1



MODULAR 1 completa - MODULAR 1 complete box

PRELIEVO FRONTALE

(confezione 6 pezzi)

SPORTELLO Modular SP1

Sportello per Modular 1, completo di elemento mobile, in profilato d'alluminio:

- anodizzato argento
- anodizzato bronzo
- verniciato rosso RAL 3003 con elemento mobile ghisa
- verniciato verde RAL 6005 con elemento mobile ghisa
- verniciato bianco RAL 9016 con elemento mobile ghisa
- verniciato ghisa
- verniciato ghisa con elemento mobile in ottone
- con Kit Pubblicità

Tutta la Serie MODULAR viene fornita con corpo e sportelli smontati.



SP1AR



SP1BR



SP1R0 / el. mob. ghisa



SP1VE / el. mob. ghisa



SP1BI



SP1GH



SP1OTT con elemento mobile in ottone
SP1OTT with polished brass flap



SP1PUB con kit pubblicità (vedi pag. 86)
SP1PUB with publicity kit (see page 86)

FRONT ACCESS

(6-pieces package)

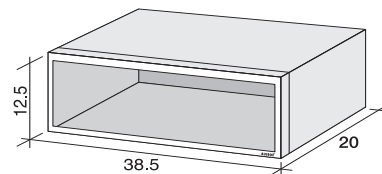
DOOR MODULAR SP1

Aluminium profile universal door for Modular 1 body, complete with flap:

- anodized - silver
- anodized - bronze
- painted in RAL 3003 red, with cast-iron grey flap
- painted in RAL 6005 green, with cast-iron grey flap
- painted in RAL 9016 white
- painted in cast-iron
- painted in cast-iron grey with brass flap
- with publicity kit

MODULAR series mailboxes are supplied in loose form ready for assembly.

MODULAR 200/1



C2001 • Corpo per cassetta componibile in alluminio con profondità 20 cm.

SOLO DA INCASSO CON CORNICE

NON CONFORME ALLE NORMATIVE EN 13724

C2001 • Body for modular mailbox aluminium with 20 cms depth.

ONLY FOR RECESS MOUNTING WITH EXTERNAL FRAME. NOT IN ACCORDANCE WITH EUROPEAN STANDARD RULES EN 13724



SPORTELLO SP1 ACC

Sportello Serie MODULAR in profilato d'alluminio predisposto per l'inserimento di campanelli, telecamera, citofono e numero civico per i modelli Bticino Sfera. Accessori vedi da pag. 42. Finiture: vedi SP1

SP1 ACC DOOR

MODULAR series panel in aluminium profile designed for incorporating doorbells, video camera, intercom and residence number for models Bticino Sfera. Accessories, see from page 42. Types of finish: see SP1



AM1 - Kit antivandalo con chiusura a tre punti per modello SP1.
AM1 - Anti-vandal kit with three-point lock for SP1 door.



(confezione da 1 pezzo)
CORPO DOPPIO
con sportello pubblicità.

(1-piece package)
DOUBLE HEIGHT BOX
with publicity door.