

IMAGINE

The air conditioner that becomes
part of your décor



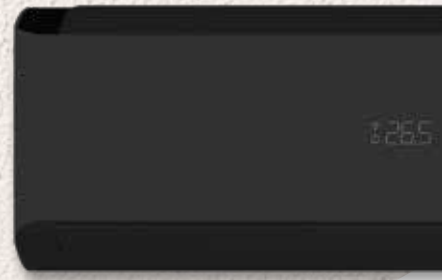
tekno
point[®]
Invisible Climate System

YOUR STYLE YOUR **IMAGINE**

Customize your split: choose a white or anthracite casing and add a front panel with the available fabric finishes.



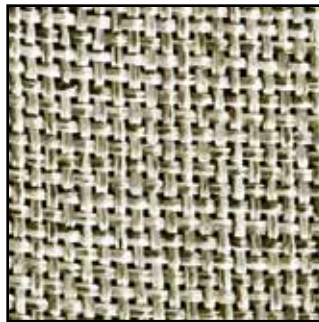
IMG-09-WH



IMG-09-BL



IMG-09-WH
+ FP BEIGE



Beige

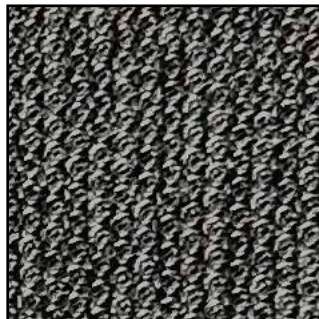
Warm and neutral



IMG-09-BL
+ FP BEIGE



IMG-09-WH
+ FP GREY



Grey

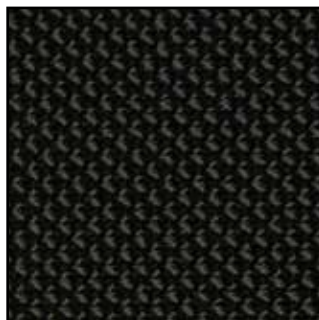
Modern and elegant



IMG-09-BL
+ FP GREY



IMG-09-WH
+ FP BLACK



Black

Bold and sophisticated



IMG-09-BL
+ FP BLACK



PURE ELEGANCE, ADVANCED TECHNOLOGY

The **Imagine** indoor unit represents the perfect balance between **advanced technology** and **customizable design**, crafted to integrate harmoniously into any environment.

Available in two refined finishes, white and anthracite, Imagine not only delivers **high-performance** cooling and heating but also becomes a true **decorative element**, enhancing the style of your space thanks to its interchangeable fabric panels.

From a technical standpoint, **Imagine combines efficiency and practicality**: it comes in **7.000, 9.000, and 12.000 Btu** versions, features vertically and horizontally adjustable vents, and is compatible with the Modbus interface.



HIGH-PERFORMANCE

Outstanding efficiency in operation;



SELF CLEANING

Removes moisture and prevents bacteria;



EASY CLEANING

Filters and components are easy to remove;



BUILT-IN WI-FI

Smart remote management;

IDEAL FOR INVISIBLE SYSTEMS

Imagine is designed to be **fully compatible with our invisible systems, such as Idra and Elfo**. This synergy allows for a powerful, quiet, and discreet air conditioning system: **the condensing unit remains completely hidden**, while **Imagine** brings comfort to your space with a touch of elegance. The result is an efficient, high-performance, and sophisticated system - perfect for those who value design and comfort without compromise.

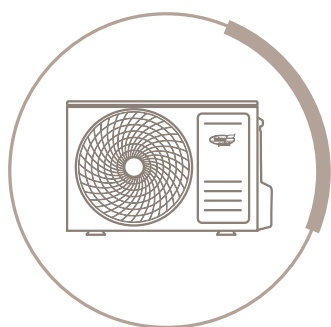


INSIDE IMAGINE'S EFFICIENCY

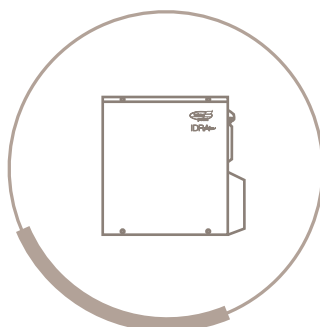
Here you'll find all the **technical features** that define Imagine's performance and reliability.

IMAGINE Technical Sheet - Wall-Mounted Indoor Unit					
Code		-	IMG-07	IMG-09	IMG-12
Power Supply		V-Hz-Ph	230-50-1	230-50-1	230-50-1
Cooling	Rated Power	W/BTU	2060/7030	2650/9050	3300/11260
Heating	Rated Power	W/BTU	2400/8200	2900/9900	3600/12290
Max Airflow		m ³ /h	650	700	700
Sound Pressure (SHi, Hi, Med, Lo, Quiet)		dB(A)	37/35/27/25/18	41/37/29/27/18	41/37/29/27/19
Sound Power (SHi, Hi, Med, Lo, Quiet)		dB(A)	49/47/39/37/29	53/49/41/39/29	53/49/41/39/30
Dimensions (LxPxH)		mm	820x210x302	820x210x302	820x210x302
Weight		Kg	8,5	8,5	8,5
Refrigerant Piping	Dimensions	inch	1/4"-3/8"	1/4"-3/8"	1/4"-3/8"
Settable Temperature	Indoor environment (cool/heat)	°C	+16~+31	+16~+31	+16~+31

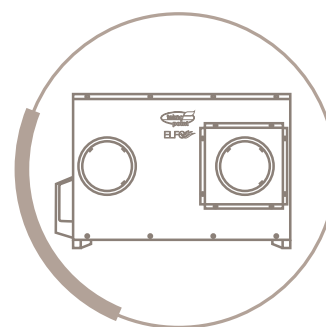
Compatible with **mono and multisplit** outdoor units:



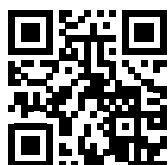
SKY
Outdoor condensing unit



IDRA
Concealed **Water-to-Air** condensing unit

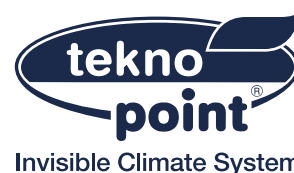


ELFO
Concealed **Air-to-Air** condensing unit



TEKNO POINT ITALIA SRL

Via dell'Artigianato, 5 • Marcon (VE) • Italy
Tel. +39 041 50 20 421
e-mail info@teknopoint.com
www.teknopoint.com



Tekno Point reserves the right to make changes at any time to its products, accessories, and technical data in order to improve its offerings. The catalogue is not intended as technical documentation and may not be updated with the product being offered commercially. We recommend requesting the official technical documentation of the product being purchased from Tekno Point Italia.